



Zona-Lize Hayward
Principal Property Practitioner
Registered with PPRA (FFC 202 322 464 4)
0834525588
zhayward@ikonic.co.za

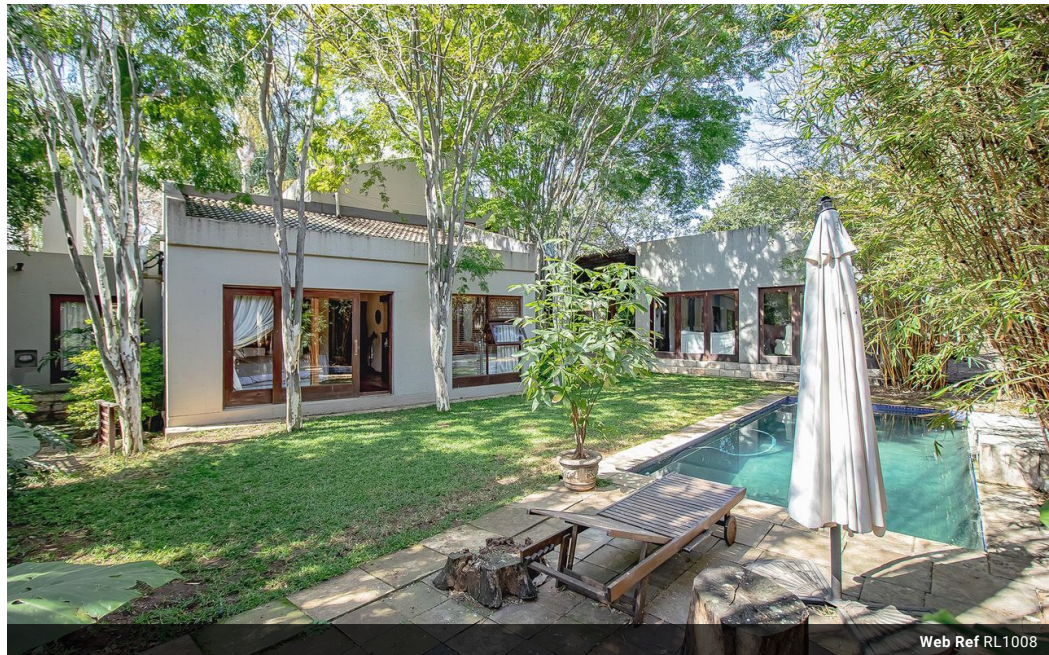


Martin Hayward
Principal Property Practitioner
Registered with PPRA (FFC 202 322 311 5)
0834525599
martin@ikonic.co.za

Contact Head Office

083 452 5599

Silver Lakes Golf Estate



Web Ref RL1008



R4,500,000

Monthly Bond Repayment R46,448.48
Calculated over 20 years at 11% with no deposit.

Transfer Costs R343,009.00 **Bond Costs** R57,265.00
These calculations are only a guide. Please ask your conveyancer for exact calculations.

4 3.5 2

Monthly Levy R2,205 **Monthly Rates** R2,082

Tranquil Family Haven in Silver Lakes Golf Estate

Nestled within a lush and maintained garden adorned with an efficient irrigation system, this property emanates an air of tranquility, charm - complimented by loads of ambience. The garden itself is a verdant oasis, offering a soothing escape from the bustle of everyday life. A highlight of the property is the private pool area, a retreat designed for relaxation and recreation. The pool area provides a refreshing haven to unwind, bask in the sun, or enjoy a leisurely swim in an inviting atmosphere. Both indoor and outdoor entertainment areas are carefully crafted to cater to your social desires. Whether you prefer the comfort of indoor gatherings or the allure of outdoor soirees, this property accommodates both. These spaces are perfect for hosting friends and family or simply enjoying quiet moments of solitude. The interior...

Features

Pets Allowed	Yes				
Interior		Exterior		Sizes	
Bedrooms	4	Garages	2	Floor Size	386m ²
Bathrooms	3.5	Carports / Parkings	2	Land Size	1,000m ²
Recep. Rooms	4	Security	Yes		
Studies	0.5	Pool	Yes		

