



**Zona-Lize Hayward**  
Principal Property Practitioner  
Registered with PPRA (FFC 202 322 464 4)  
0834525588  
zhayward@ikonic.co.za

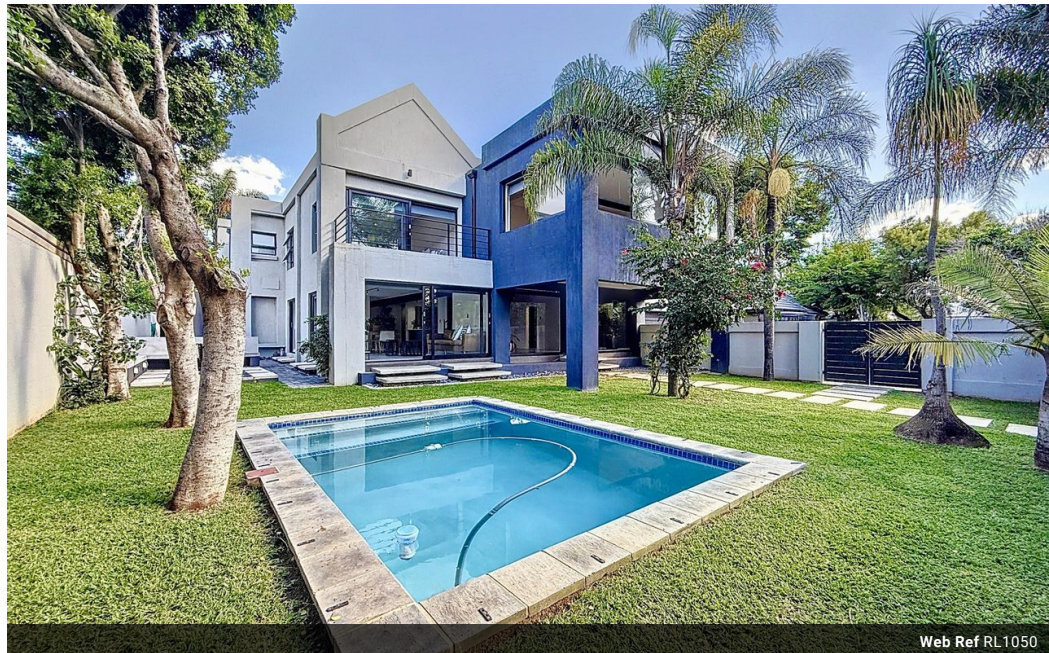


**Martin Hayward**  
Principal Property Practitioner  
Registered with PPRA (FFC 202 322 311 5)  
0834525599  
martin@ikonic.co.za

Contact Head Office

083 452 5599

Silver Lakes Golf Estate



Web Ref RL1050



**R8,500,000**

5 5.5 2

**Monthly Bond Repayment** R87,736.01

Calculated over 20 years at 11% with no deposit.

**Transfer Costs** R810,214.00 **Bond Costs** R80,035.00

These calculations are only a guide. Please ask your conveyancer for exact calculations.

**Monthly Levy** R2,205 **Monthly Rates** R2,950

### Architectural Elegance Meets Modern Luxury in Silver Lakes Golf Estate

Jointly Marketed. In the realm of residential architecture, few homes manage to capture both the spirit of contemporary elegance and the warmth of a magical family abode as seamlessly as this property. Recently undergone a comprehensive renovation, this home stands as a testament to a masterful blend of inspiration and meticulous architecture designed for modern day luxury living. At the heart of the home's design is the interplay between expansive living areas and the natural environment surrounding it. Crafted with uncompromised quality and an acute attention to detail, the residence exudes a modern elegance that is both palpable and functional. The living spaces, generously proportioned and richly appointed, are designed to seamlessly integrate the indoors with the outdoors, creating a dynamic living environment adaptable...

### Features

Pets Allowed		Yes	
Interior		Exterior	
Bedrooms	5	Garages	2
Bathrooms	5.5	Security	Yes
Recep. Rooms	6	Dom. Accom.	1
Studies	1	Pool	Yes
Sizes			
Floor Size		603m <sup>2</sup>	
Land Size		812m <sup>2</sup>	

