



Zona-Lize Hayward
Principal Property Practitioner
Registered with PPRA (FFC 202 322 464 4)
0834525588
zhayward@ikonic.co.za



Martin Hayward
Principal Property Practitioner
Registered with PPRA (FFC 202 322 311 5)
0834525599
martin@ikonic.co.za

Contact Head Office

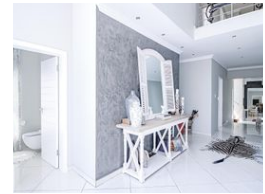
083 452 5599

Silver Lakes Golf Estate

UNDER OFFER



Web Ref RL1072



R8,680,000

5 4.5 4

Monthly Bond Repayment R89,593.95
Calculated over 20 years at 11% with no deposit.

Transfer Costs R830,014.00 **Bond Costs** R80,035.00
These calculations are only a guide. Please ask your conveyancer for exact calculations.

Monthly Levy R2,800 **Monthly Rates** R4,800

Contemporary Elegance in a Family-Friendly Haven in Silver Lakes Golf Estate

Experience the epitome of modern living in this contemporary designed family home, where every detail reflects fantastic style and flair. The home is characterized by its exclusive finishes and state-of-the-art fixtures and fittings, all bathed in abundant natural light. Upon entering, you are greeted by an impressive double volume entrance that opens up to lavish and generous open-plan receptions. These areas seamlessly spill out to expansive indoor and outdoor entertainment spaces, creating a sophisticated yet relaxed ambiance. High ceilings and large window scapes enhance the sense of space. The ultra-modern kitchen is a chef's dream, equipped with integrated appliances and designed for both functionality and style. On offer is a large indoor entertainment area that also features an inviting cocktail area, perfect for...

Features

Pets Allowed		Exterior		Sizes	
	Yes	Garages	4	Land Size	1,935m ²
Interior		Security	Yes		
Bedrooms	5	Dom. Accom.	2		
Bathrooms	4.5	Pool	Yes		
Recep. Rooms	5				
Studies	1				

