



Zona-Lize Hayward
Principal Property Practitioner
Registered with PPRA (FFC 202 322 464 4)
0834525588
zhayward@ikonic.co.za

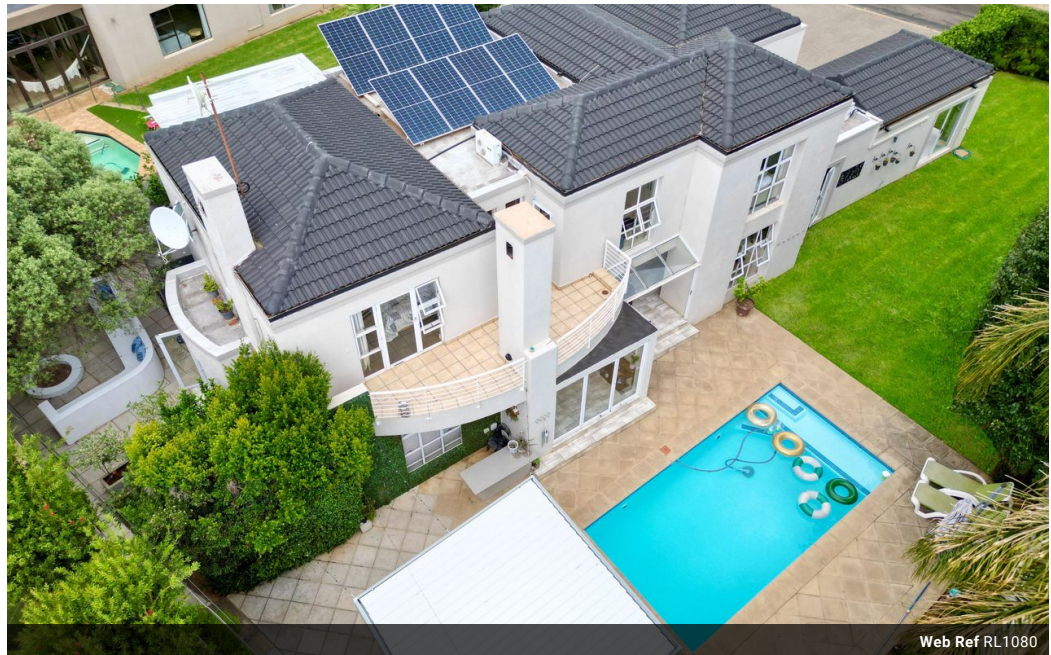


Martin Hayward
Principal Property Practitioner
Registered with PPRA (FFC 202 322 311 5)
0834525599
martin@ikonic.co.za

Contact Head Office

083 452 5599

Silver Lakes Golf Estate



Web Ref RL1080



R5,450,000

4 4 3

Monthly Bond Repayment R56,254.27
Calculated over 20 years at 11% with no deposit.

Transfer Costs R457,307.00 **Bond Costs** R65,785.00
These calculations are only a guide. Please ask your conveyancer for exact calculations.

Monthly Levy R2,808 **Monthly Rates** R3,600

Contemporary Family Residence in Silver Lakes Golf Estate

Presented by Ikonik Real Estate. Situated in a prestigious estate that offers a wealth of family-friendly amenities, this home provides a safe and vibrant community lifestyle with access to parks, walking trails, and top-tier facilities. If you're looking for a modern, move-in-ready family retreat that perfectly balances luxury, functionality, and everyday comfort, this home is an unmissable opportunity.

Nestled in a quiet street, this newly renovated residence caters for modern-day family living. Offering a perfect blend of style, harmony and space. A home designed for effortless entertaining, making it the ideal haven for those who value luxury, functionality, and security. Light-filled, open-plan living spaces create a warm and inviting atmosphere. Thoughtfully designed for seamless indoor-outdoor flow, the home boasts...

Features

Pets Allowed Yes

Interior

Bedrooms 4
Bathrooms 4
Recep. Rooms 3
Studies 1

Exterior

Garages 3
Security Yes
Dom. Accom. 1
Pool Yes

Sizes

Floor Size 417m²
Land Size 875m²

